



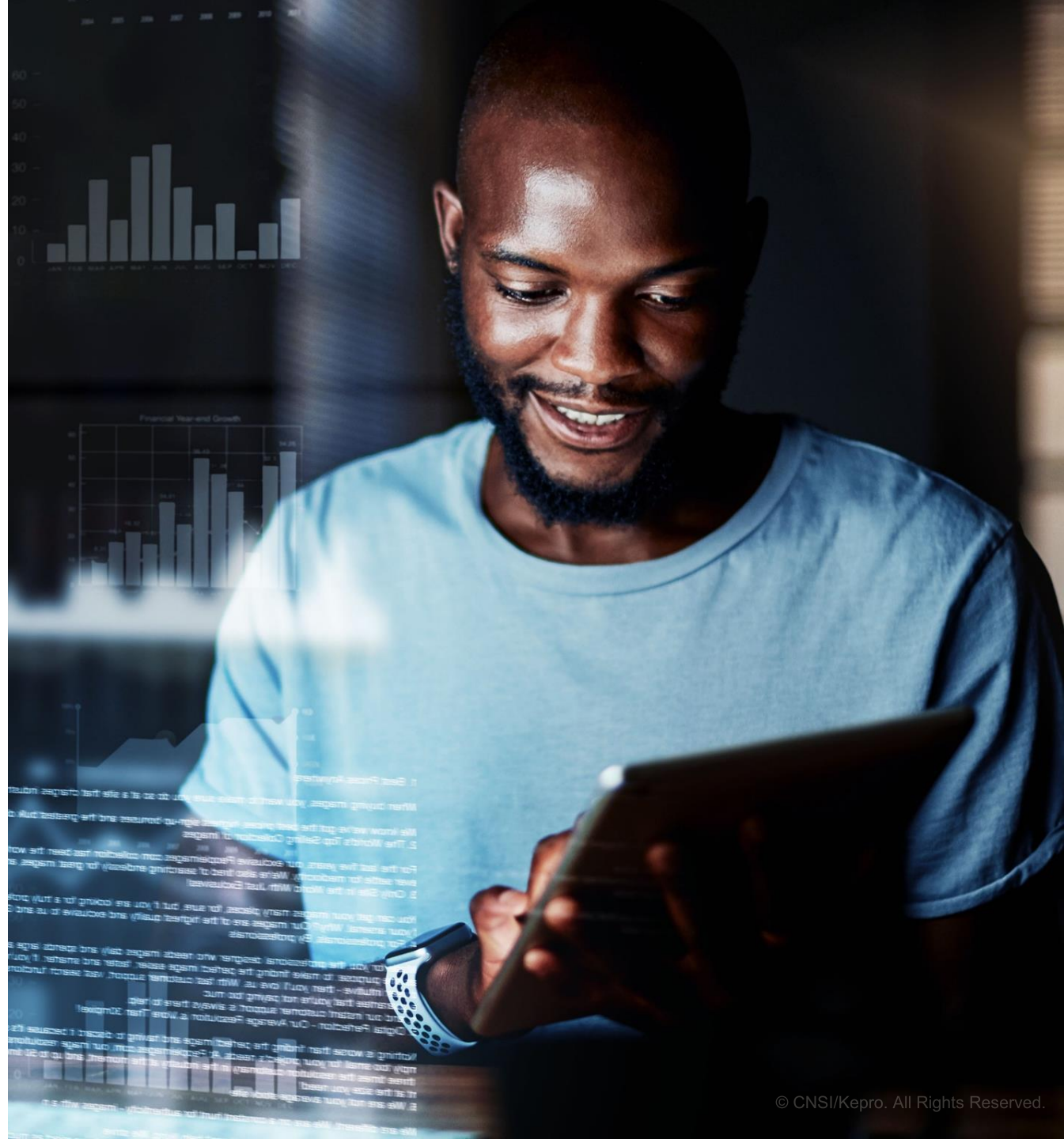
# WEST VIRGINIA DRUG UTILIZATION REVIEW BOARD MEETING

---

November 19, 2025



- **Rachele Poissant, PharmD**  
Clinical Account Manager
- **Cory Chambliss**  
Operations Director
- **Scott Donald, PharmD**  
Director of Clinical Services



# RDUR Patient Reviews

	Target Intervention	Profiles Reviewed	Letters Sent	Response Rate
Jul	CYP2D6 Drug Interactions	589	702	5%
Aug	Increased Risk of Renal Impairment	596	469	4%
Sep	SUPPORT Act	595	726	8%

# RDUR Patient Reviews

## July 2025: CYP2D6 Drug Interactions

### Drugs included:

- CYP2D6 Substrates
- CYP2D6 Inhibitors
- CYP2D6 Inducers

- The coadministration of selected medication(s) and a potent CYP2D6 inhibitor (e.g., fluoxetine, paroxetine, or quinidine) should be done with caution. Selected medication(s) is metabolized by the CYP2D6 pathway and concurrent use with a potent CYP2D6 inhibitor may result in increases in the AUC and Cmax of selected medication(s). Dosage adjustment of medication(s) may be necessary.
- Coadministration of selected medication(s) and drugs metabolized by P450 isoenzyme 2D6 should be approached with caution. Selected medication(s) inhibits CYP2D6, and concurrent use with CYP2D6 substrates (e.g., nortriptyline, venlafaxine, paroxetine, risperidone, metoprolol, and propafenone) can increase the exposure of the CYP2D6 substrate. When used concomitantly with selected medication(s), it may be necessary to decrease the CYP2D6 substrate dose, particularly for substrates with a narrow therapeutic index.



# RDUR Patient Reviews

## August 2025: Increased Risk of Renal Impairment

### Drugs included:

-Lithium	-COX2 Inhibitors
-Antiarrhythmics	-Topiramate
-Minoxidil	-Tramadol
-Fluoroquinolones	-Almotriptan
-Beta Blockers	-Statins
-Sulfonylureas	-Niacin
-Metformin	-Fenofibrate
-Amantadine	-Gemfibrozil
-Famotidine	-Drospirenone/ethinyl estradiol
-Antidepressants	-Cimetidine
-Tizanidine	

- Due to renal impairment, there may be reduced clearance of this selected medication(s) agent in this patient. Dosage adjustment may be needed.
- Selected medication(s) should be used with caution in patients with moderate to severe renal impairment. To compensate for the increased elimination half-life of this medication, consider decreasing the dose or extending the dosing interval in these patients.
- Certain selected medication(s) which are partially or primarily renally excreted, may require dosage adjustment in patients with renal impairment.



# RDUR Patient Reviews

---

**September 2025:**

**SUPPORT Act of 2018**

Drugs included:

- Benzodiazepines
- Opioids
- Antipsychotics

- Co-administration of opioids and benzodiazepines should be done with extreme caution as the combination may result in respiratory depression, hypotension, profound sedation, coma, and death. If concurrent administration is clinically warranted, consider dosage reduction of one or both agents. Re-evaluate the patient's treatment plan on a regular basis to determine the necessity for continued concomitant use of these agents. The SUPPORT Act of 2018 requires that Medicaid monitor the concurrent use of opioids and benzodiazepines.
- The concurrent use of an opioid with an antipsychotic may cause hypotension, profound sedation, respiratory depression, coma, and death. Because of these risks, reserve concomitant prescribing of these drugs for use in patients for whom alternative treatment options are inadequate. If co-administration is required, consider dosage reduction of one or both agents. The SUPPORT Act of 2018 requires that Medicaid monitor the concurrent use of opioids and antipsychotics.



# RDUR Outcomes Report

	Criteria	PRE Targeted Patients	POST Targeted Patients with Hits	POST Targeted Patients with Change
October 2024	Diabetes Mellitus and ASCVD Risk	282	135	62.77%
November 2024	Underutilization of Antihypertensives	289	10	96.54%
December 2024	Selected Black Box Warnings	316	145	54.11%
January 2025	Enhanced Risk of Respiratory Depression	336	219	34.82%
February 2025	Drug Interactions With Oral Contraceptives	228	68	70.18%
March 2025	Increased risk for hypotension	325	156	52.00%
<b>Total</b>		<b>1,776</b>	<b>733</b>	<b>60.42%</b>

# Lock-In Interventions

Month	Reviewed	Warning Letter	Locked In
April	75	7	0
May	75	6	0
Jun	75	8	1
<b>Totals</b>	<b>225</b>	<b>21</b>	<b>1</b>



# 2025 Third Quarter Newsletter



## FDA-Approval Spotlight

Blujepa (gepotidacin)

## 2024 Guideline Update

2025 AHA/ACC High  
Blood Pressure  
Guidelines

## Legislative News

West Virginia Senate Bill 526 -  
Pharmacist Prescribing Authority